

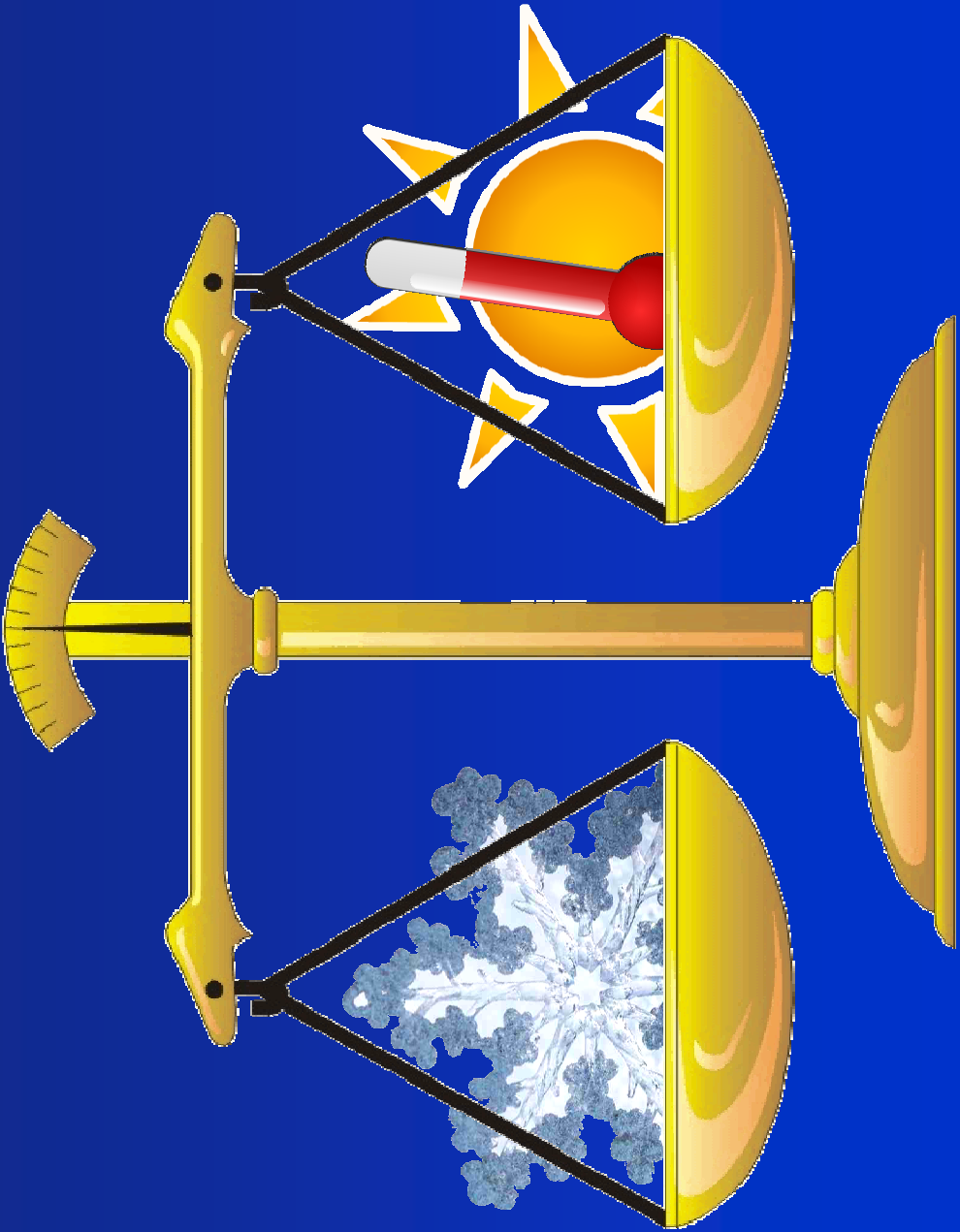


# *Quanto ghiaccio sta scomparendo in Trentino, e perché?*

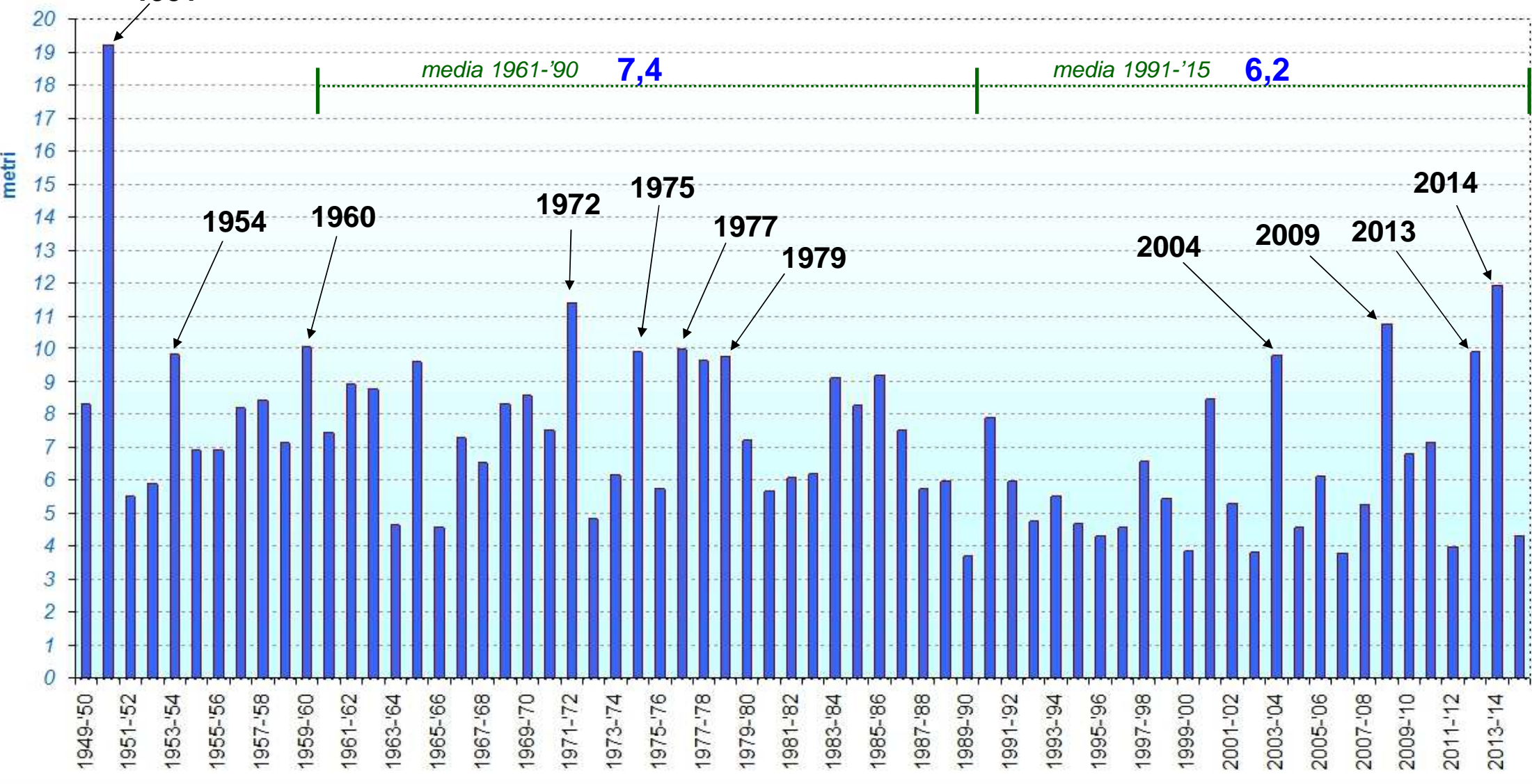
*Trento, 9 ottobre 2015*

*Alberto Trenti*

 *Meteotrentino*

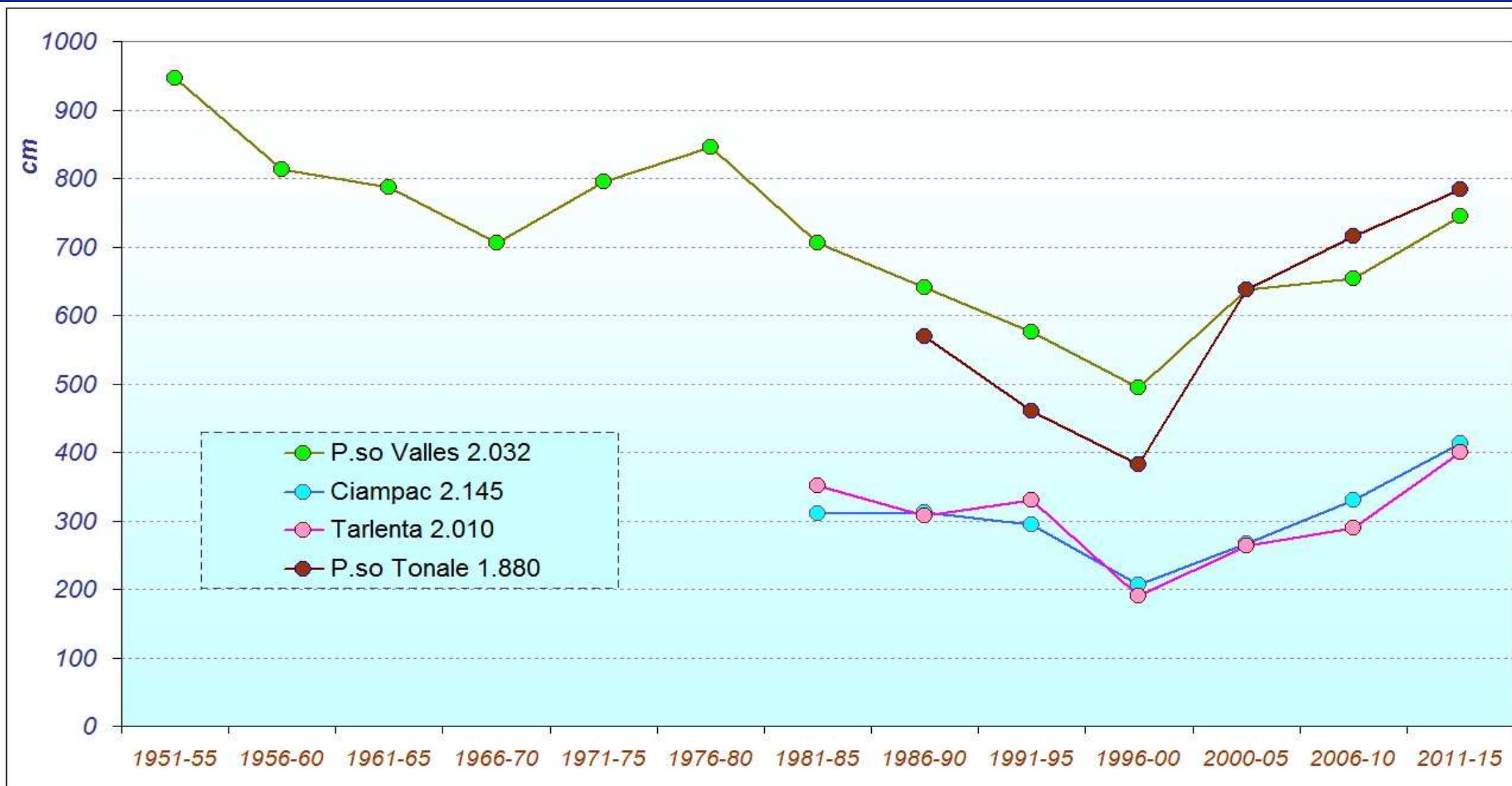


# PASSO VALLES (quota 2.032) - nevicate annuali



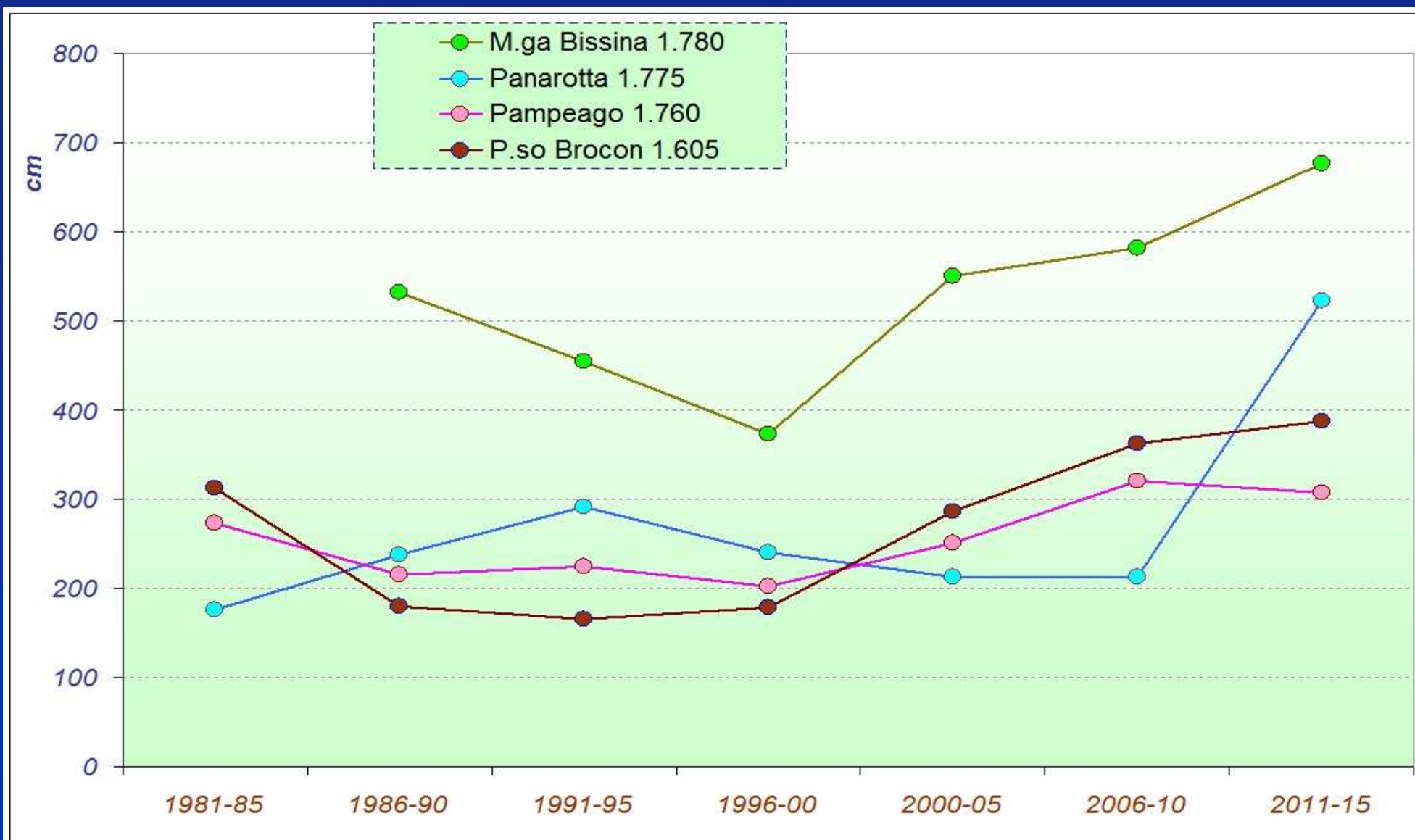
# NEVE FRESCA ANNUALE (medie annuali per quinquennio)

*Quote alte*



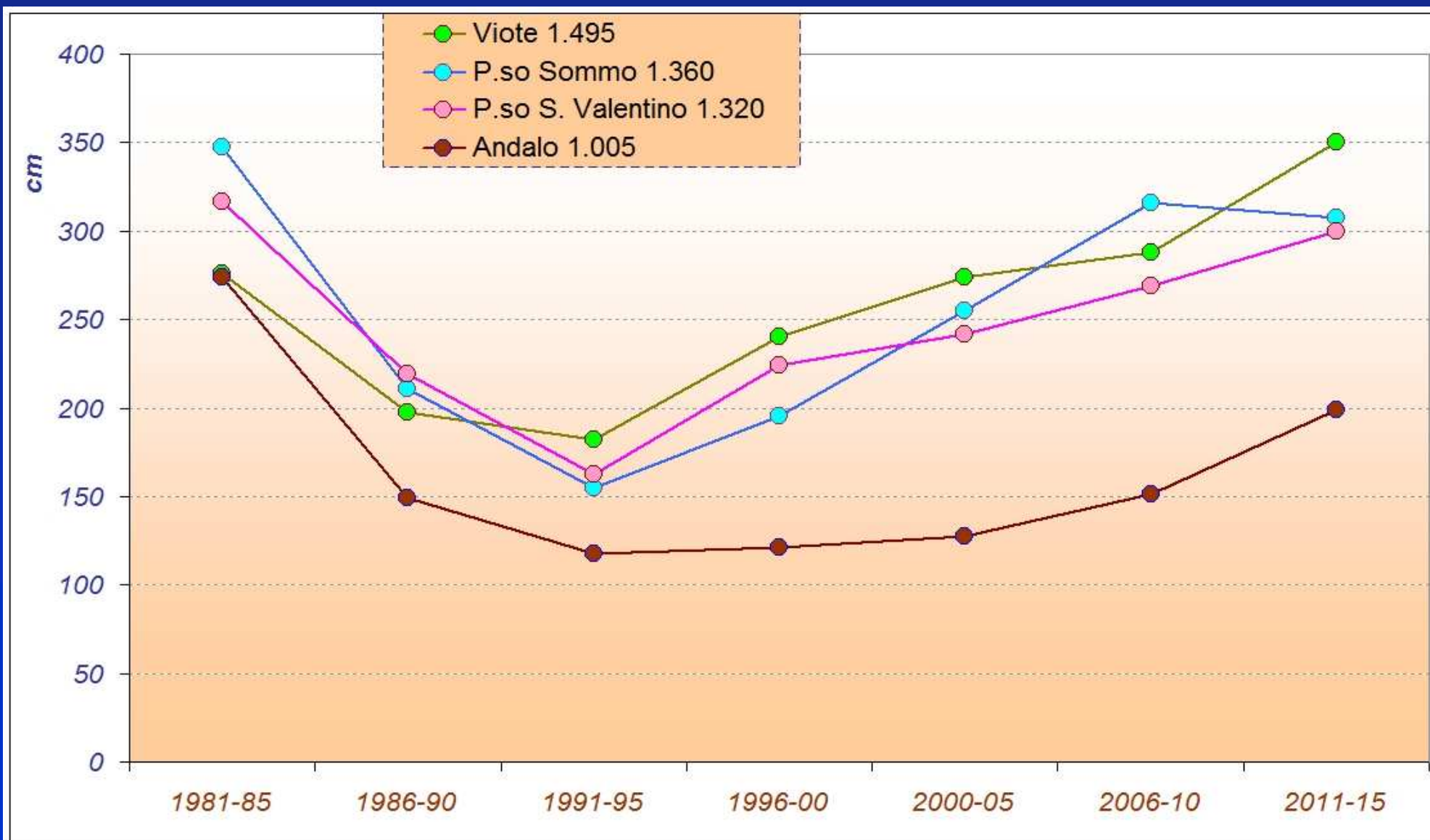
# NEVE FRESCA ANNUALE (medie annuali per quinquennio)

*Quote medie*

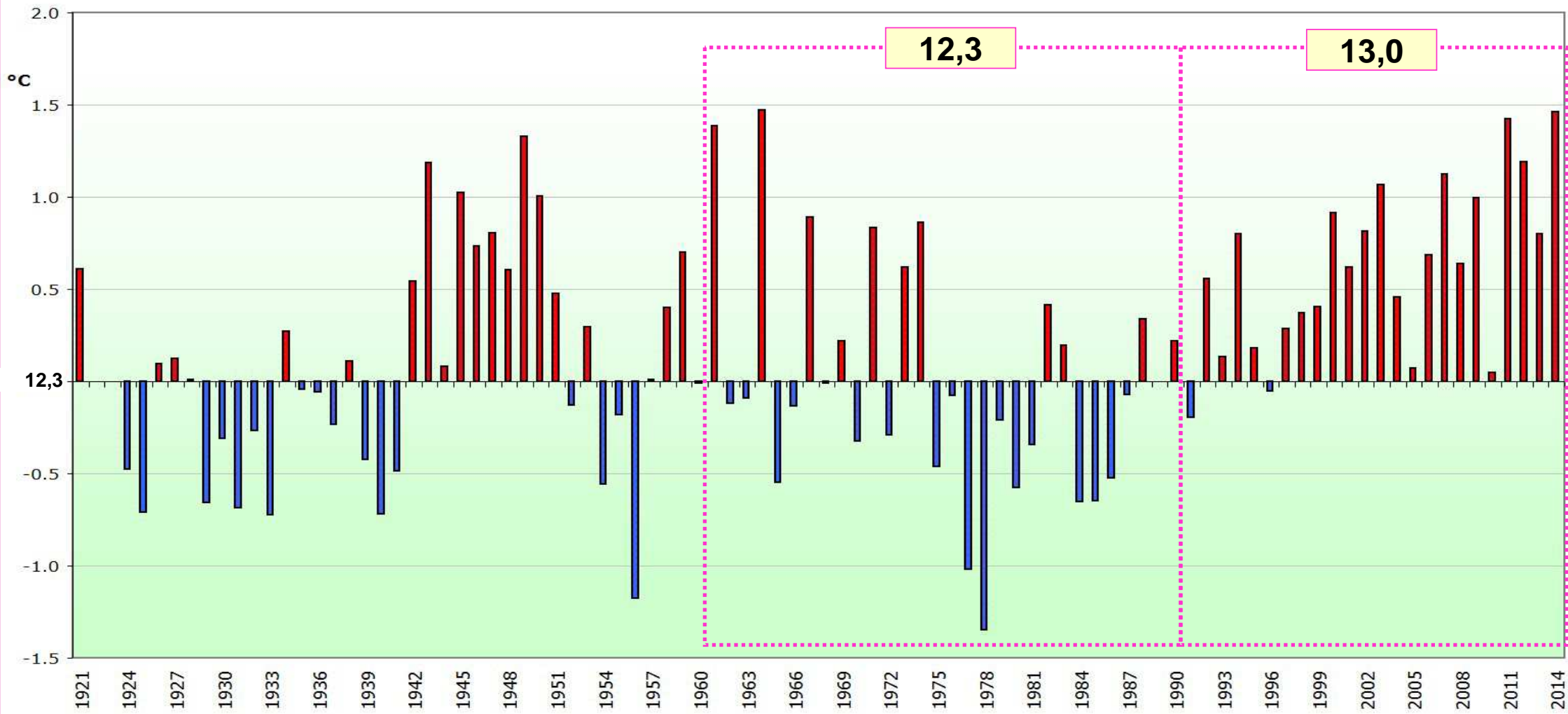


# NEVE FRESCA ANNUALE (medie annuali per quinquennio)

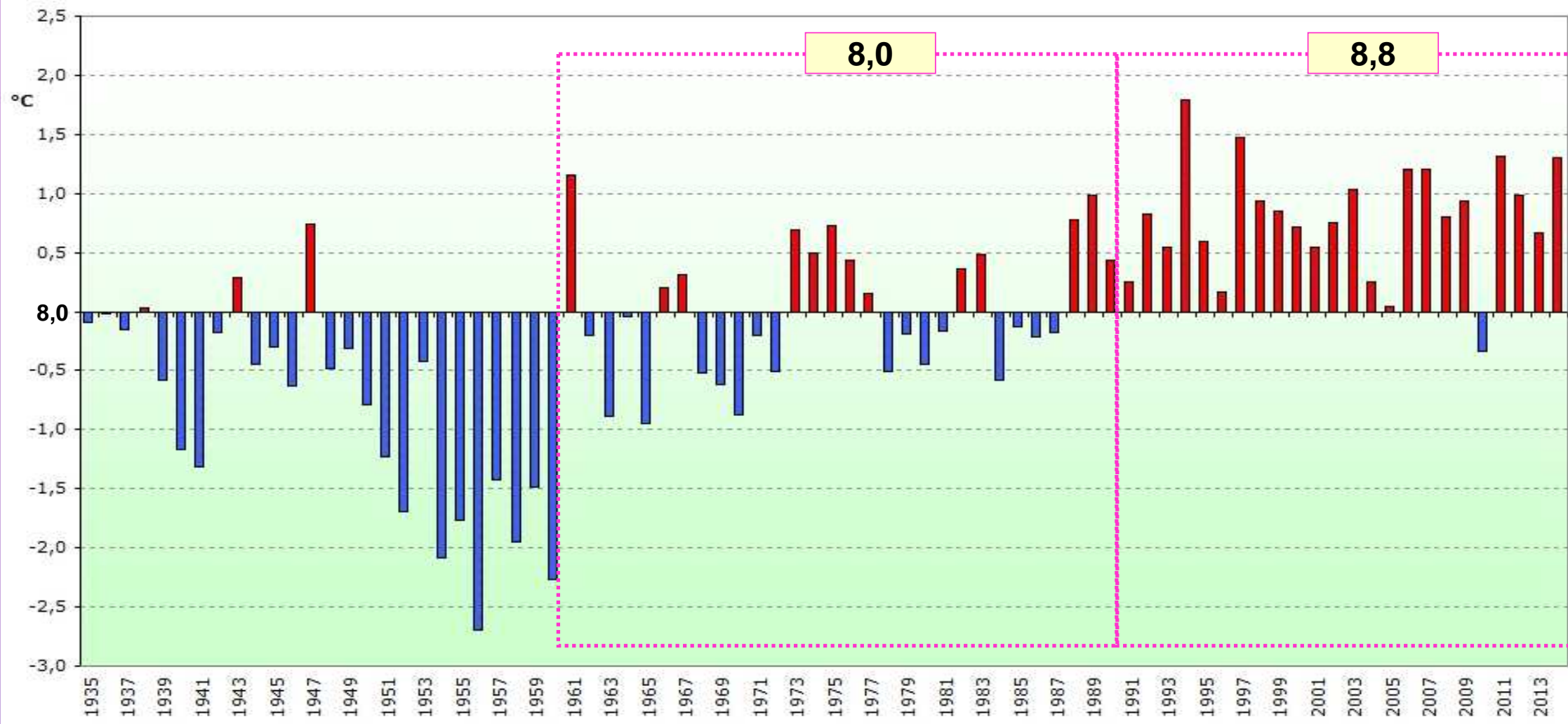
*Quote basse*



# Trento Laste (quota 350) MEDIA ANNUA



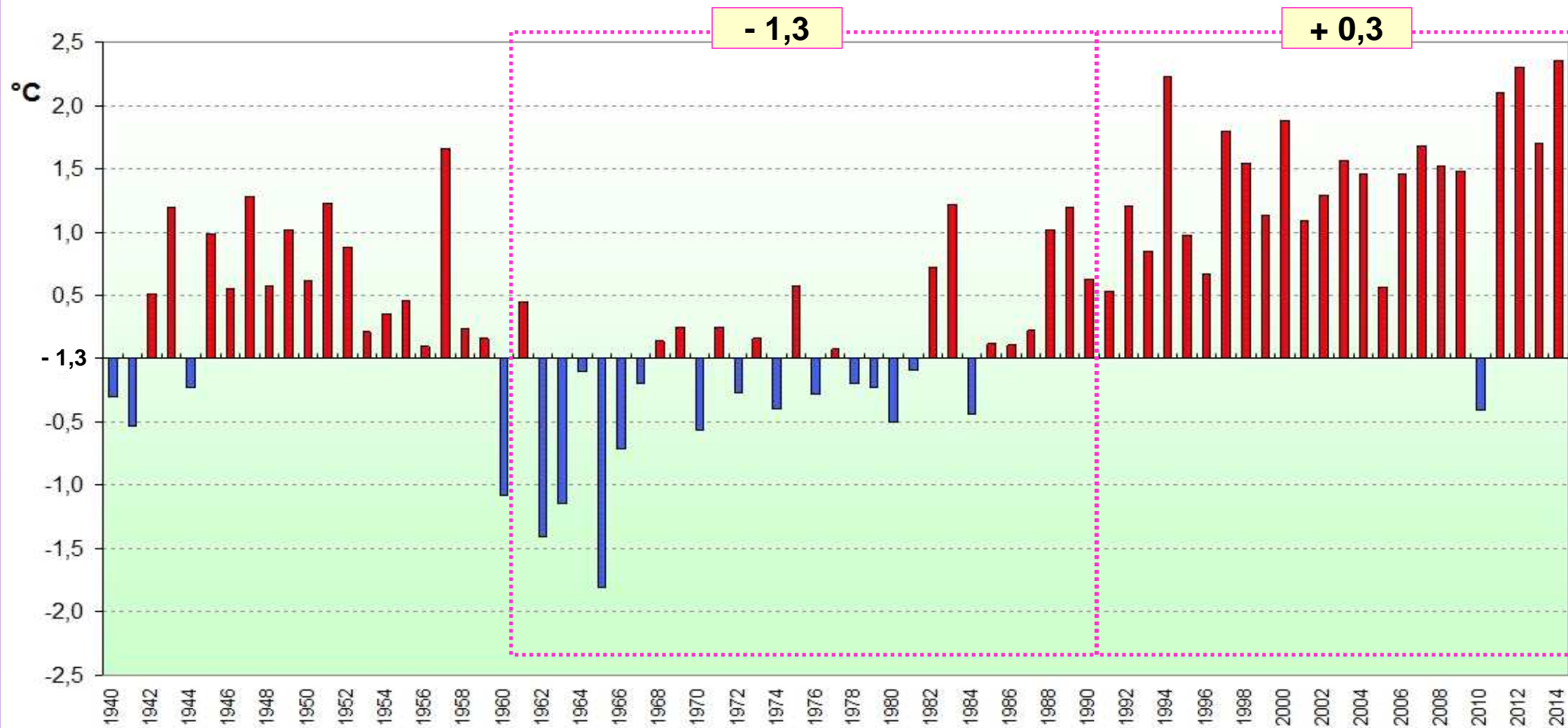
# Cavalese (quota 960) MEDIA ANNUA



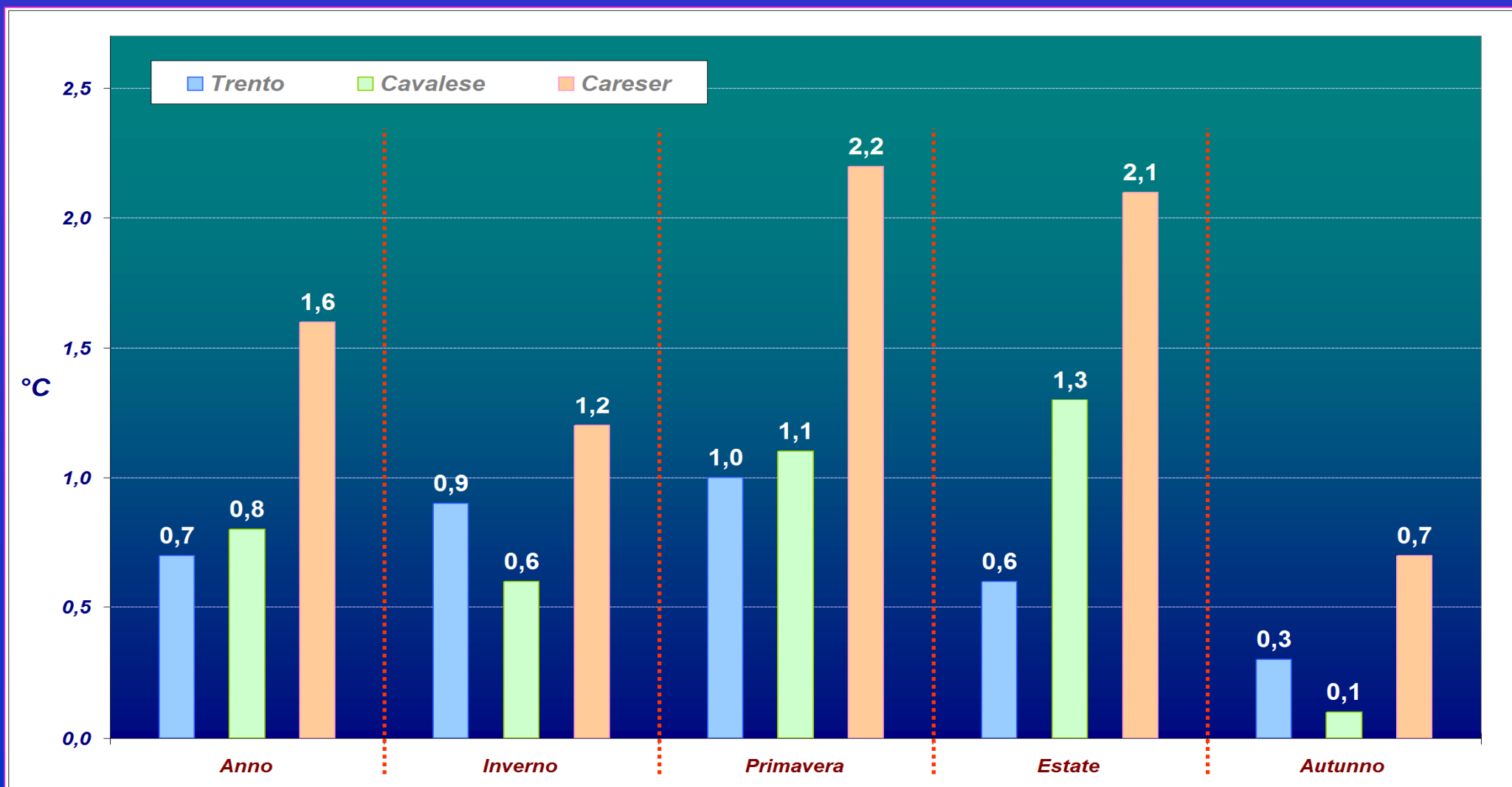


Careser Lago (quota 2.600)

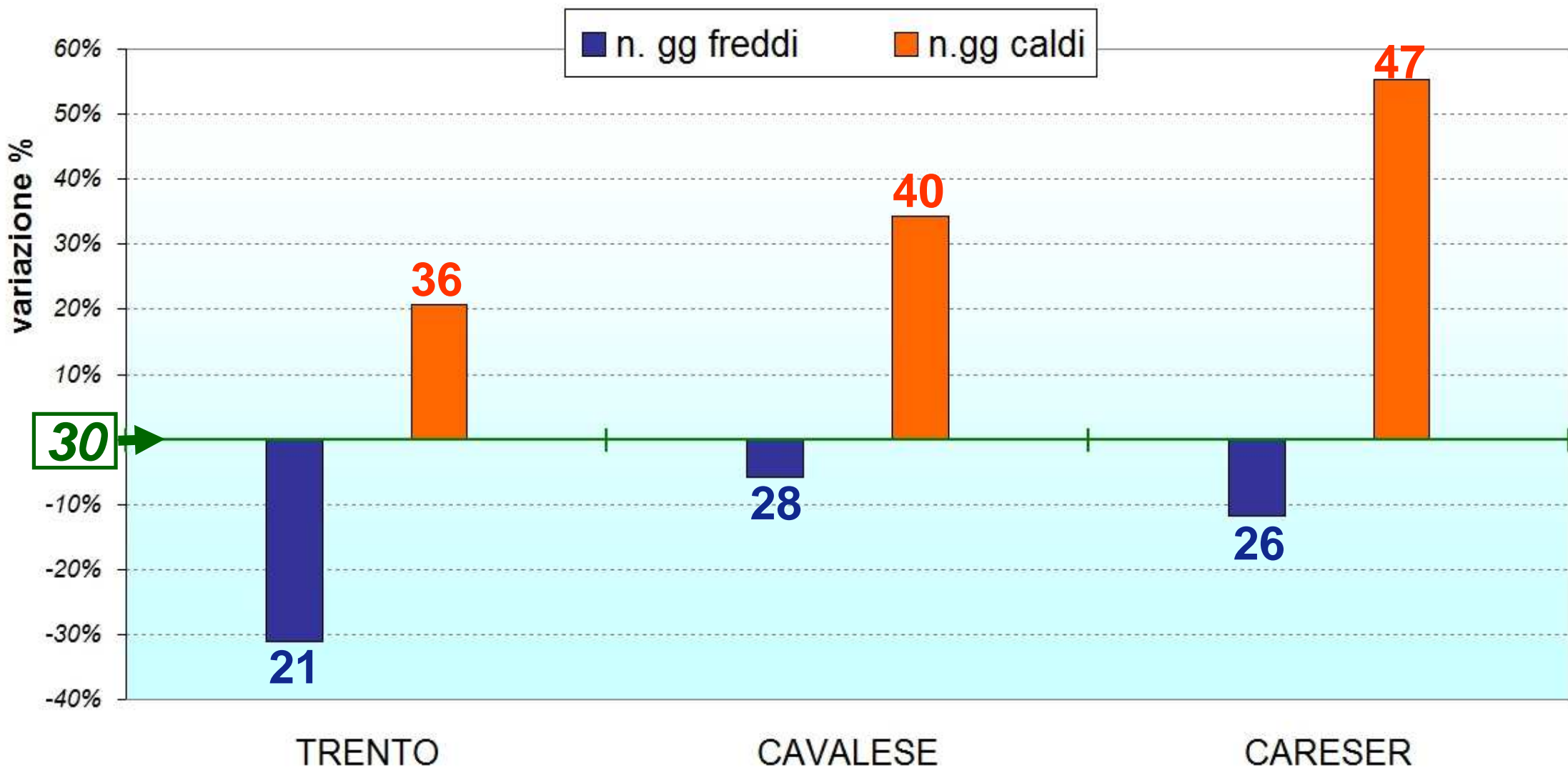
MEDIA ANNUA



## Anomalie di temperatura media annuali e stagionali (1991-2014 rispetto a 1961-'90)

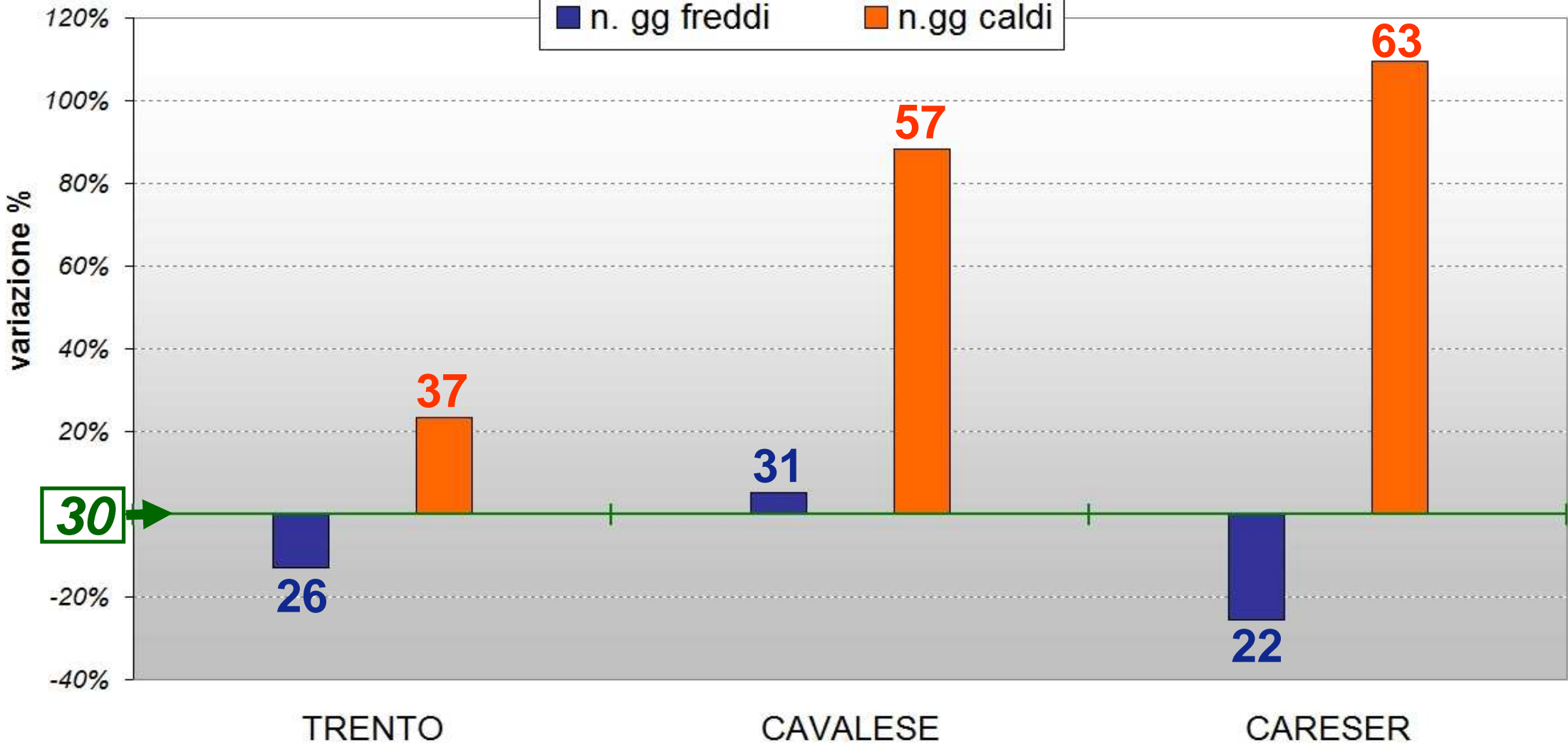


**SEMESTRE INVERNALE** anomalie '91-'15 rispetto a '61-'90



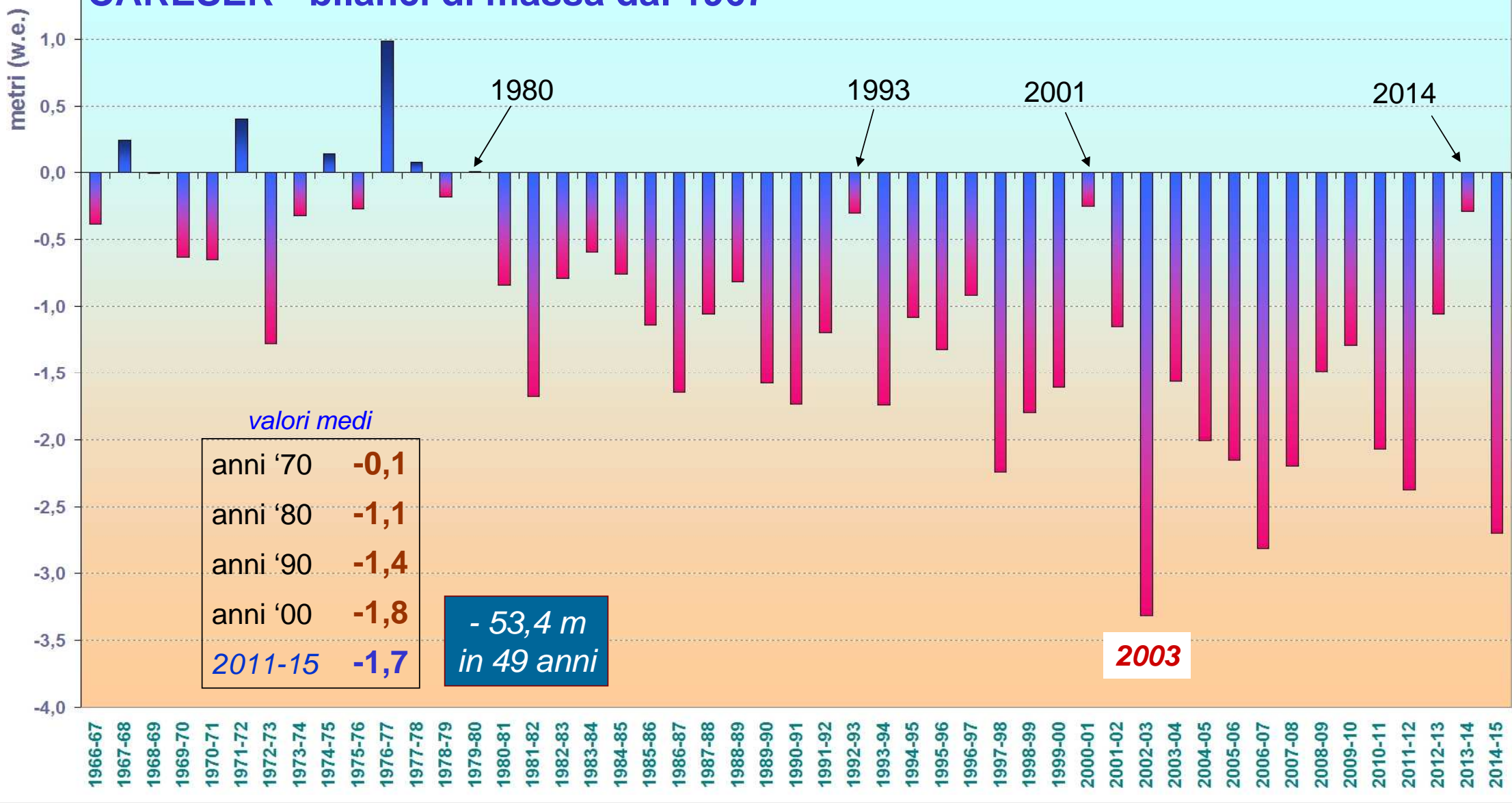
**SEMESTRE ESTIVO** anomalie '91-'15 rispetto a '61-'90

■ n. gg freddi    ■ n. gg caldi

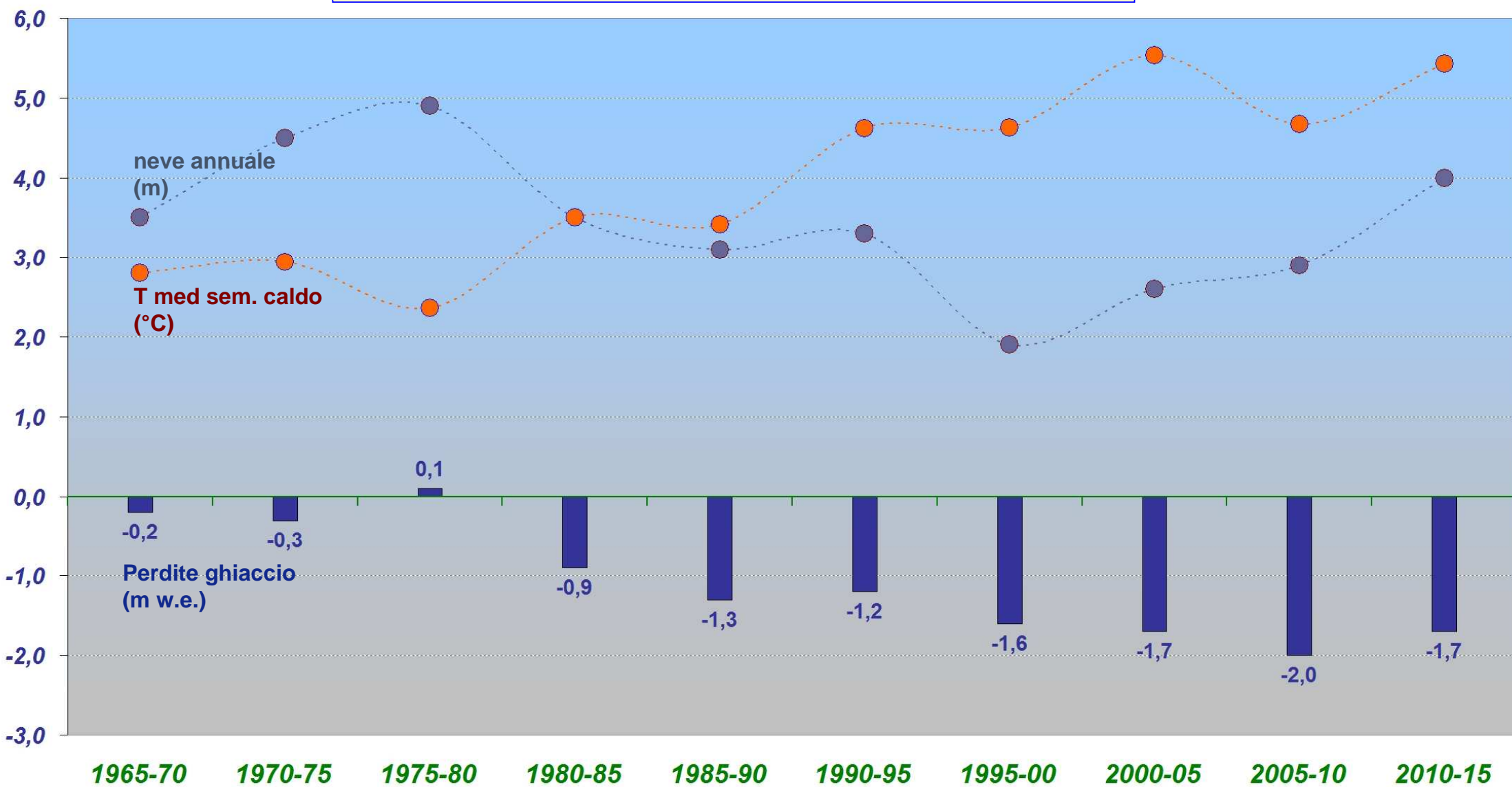


30

# CARESER - bilanci di massa dal 1967

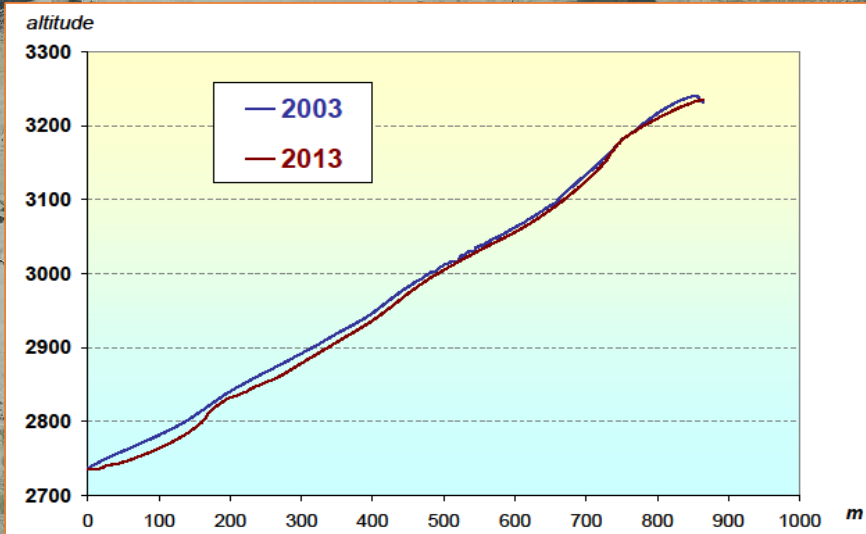
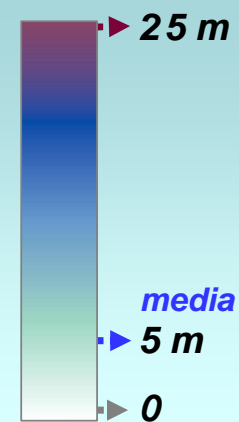


## CARESER – medie annuali per quinquennio

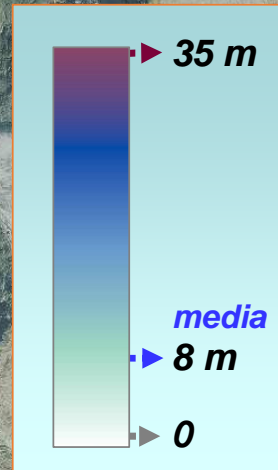


*Marmolada*  
(160 ha)

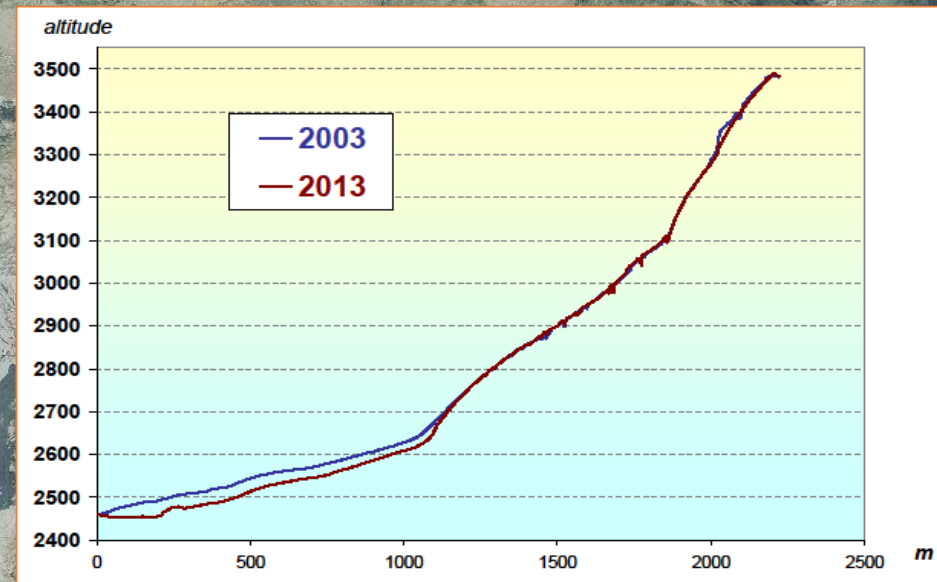
**Spessore di ghiaccio  
perso in dieci anni  
(2003 – 2013)**



*Presanella*  
(290 ha)

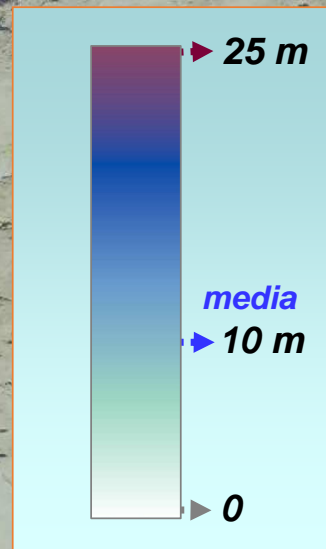


**Spessore di ghiaccio perso in dieci anni  
(2003 – 2013)**

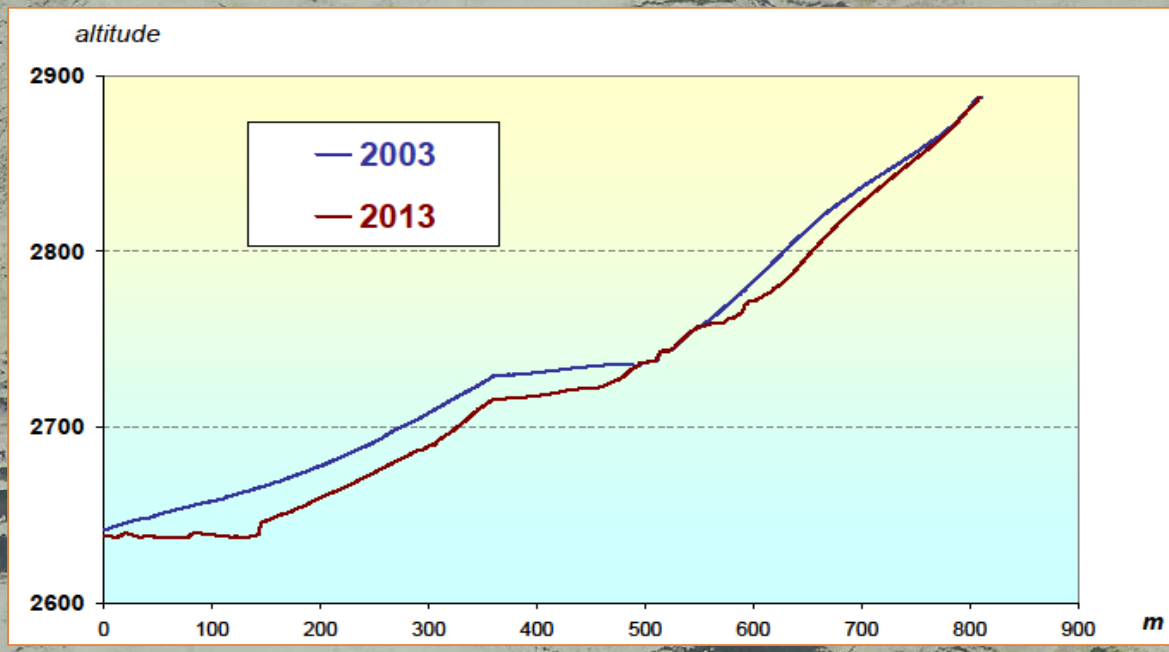




*Fradusta*  
(55 ha)

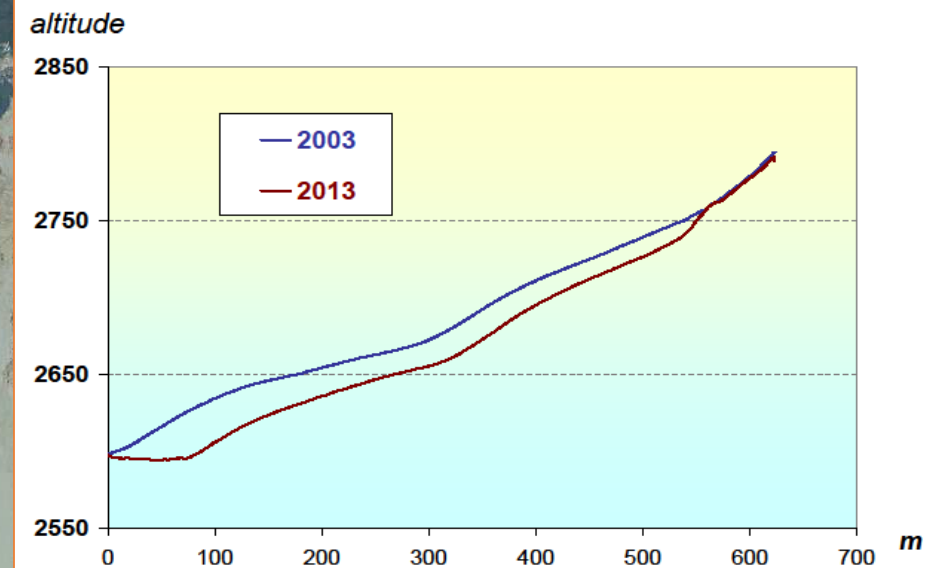
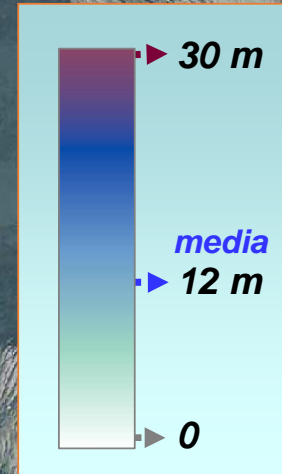


**Spessore di ghiaccio  
perso in dieci anni  
(2003 – 2013)**

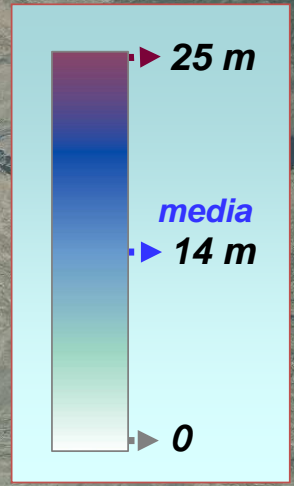
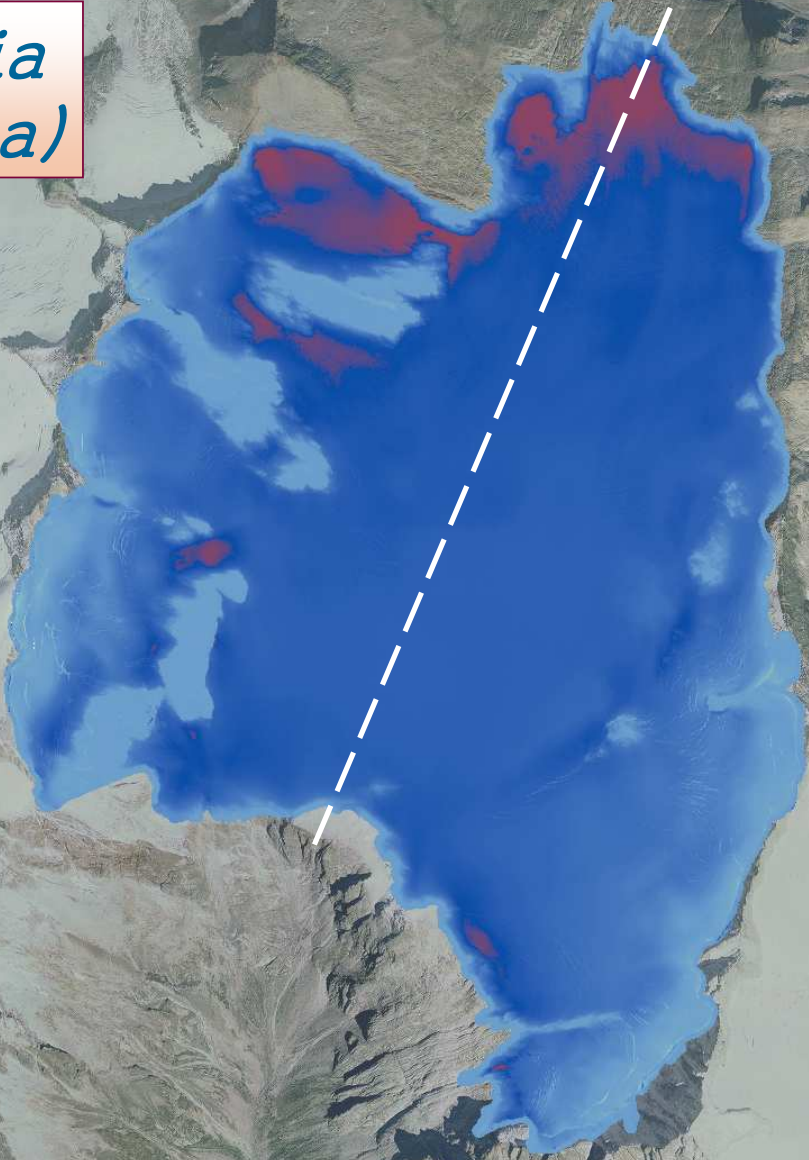


*Agola*  
(22 ha)

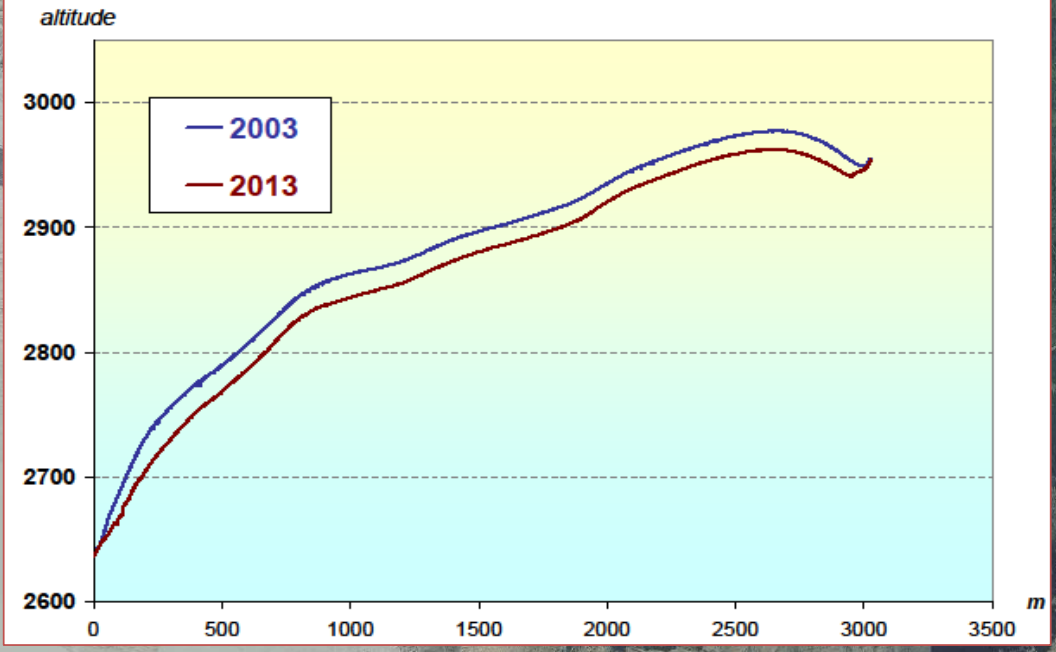
**Spessore di ghiaccio  
perso in dieci anni  
(2003 – 2013)**



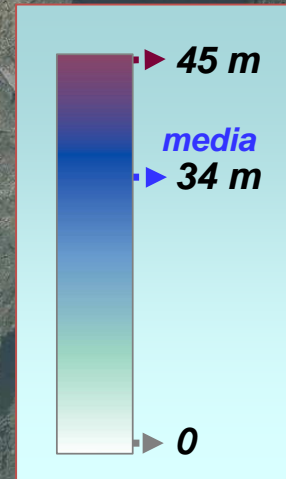
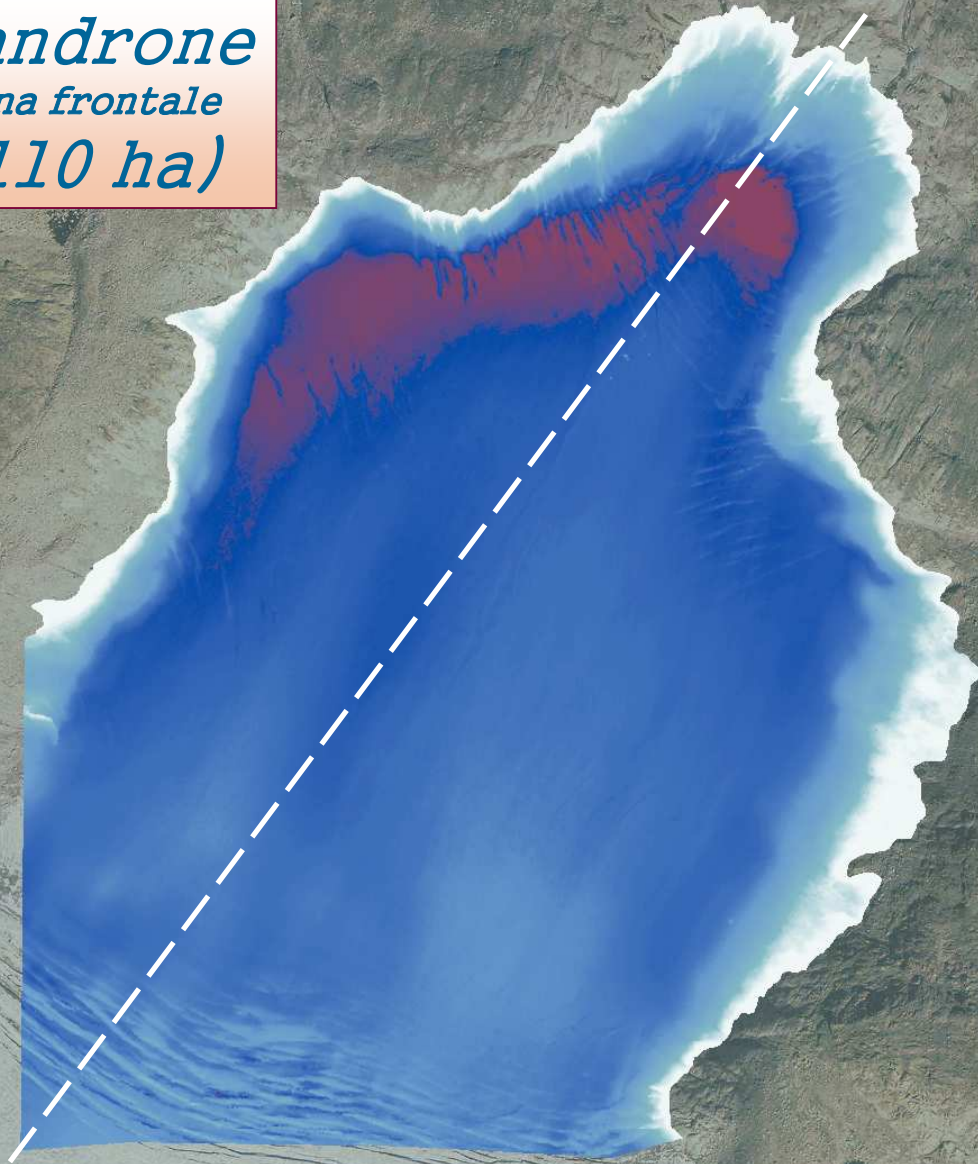
*Lobbia*  
(670 ha)



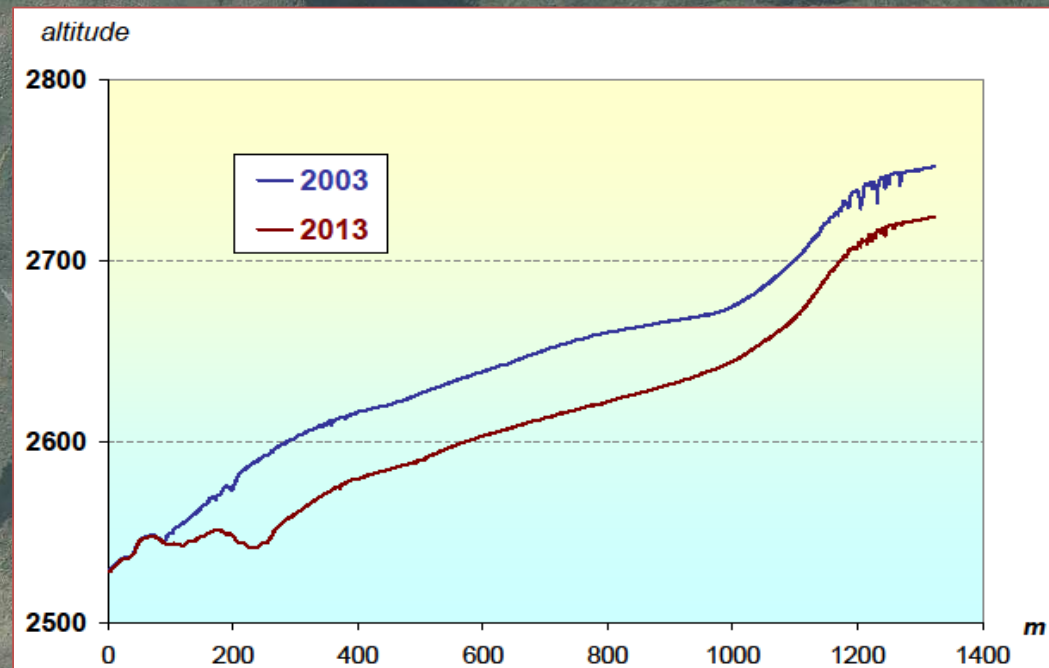
**Spessore di ghiaccio  
perso in dieci anni  
(2003 – 2013)**

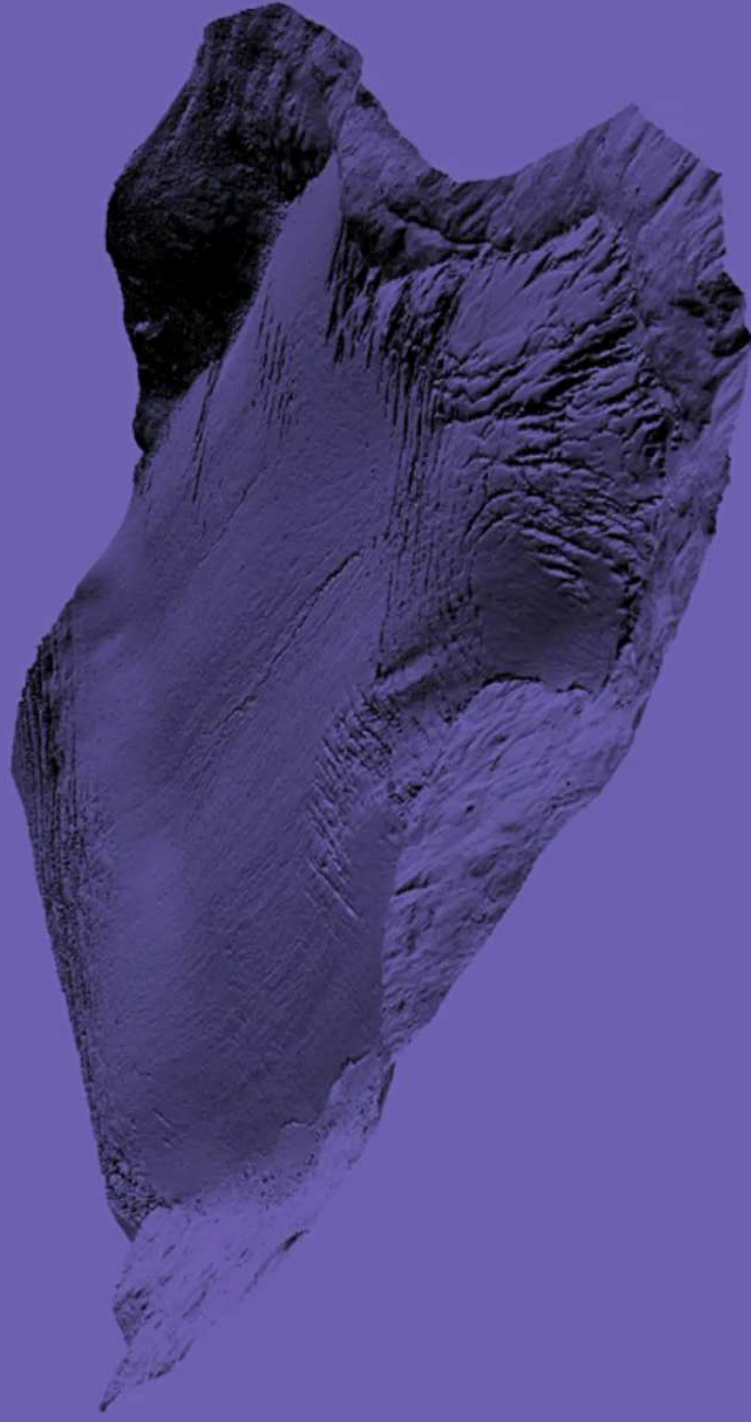


**Mandrone**  
zona frontale  
(110 ha)



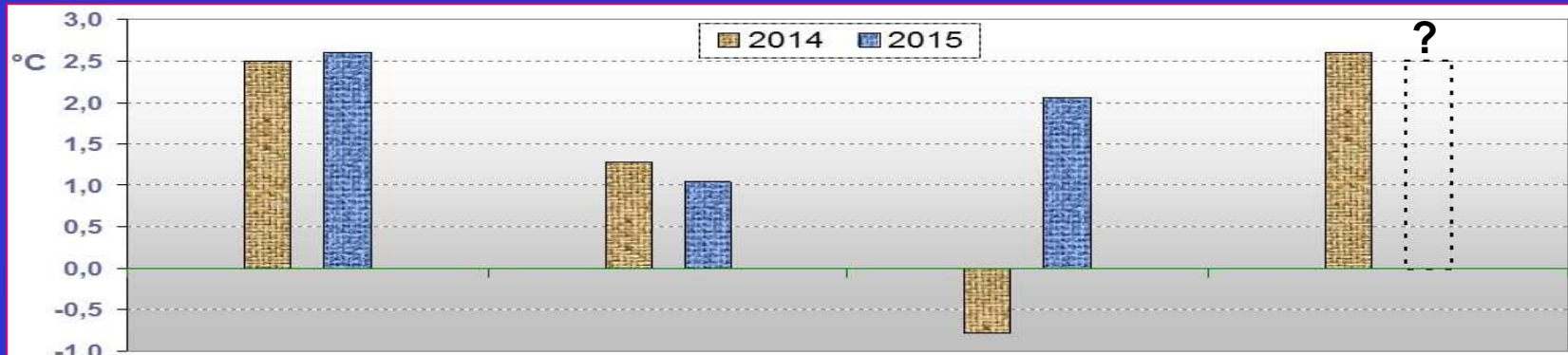
**Spessore di ghiaccio  
perso in dieci anni  
(2003 – 2013)**





**DTM-Lidar** celle 0,5 x 0,5 m – **ottobre 2003**

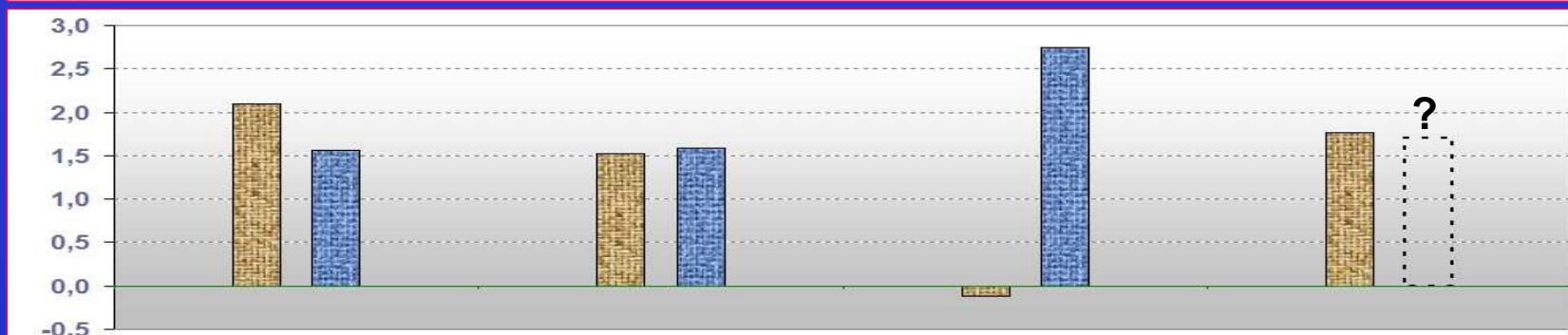
Trento



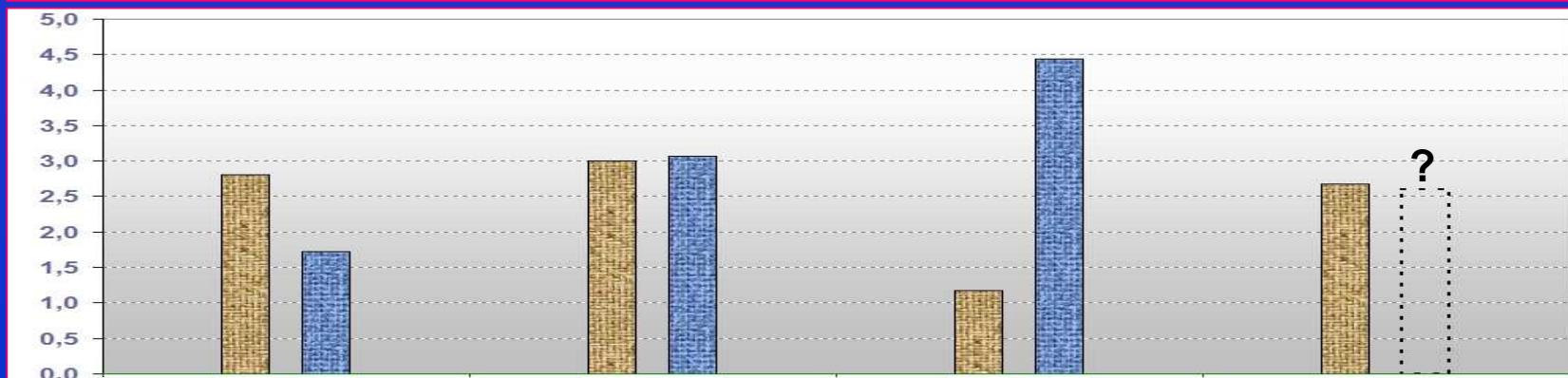
TEMPERATURE  
MEDIE  
STAGIONALI

anomalie  
rispetto a  
1961-'90

Cavalese



Careser



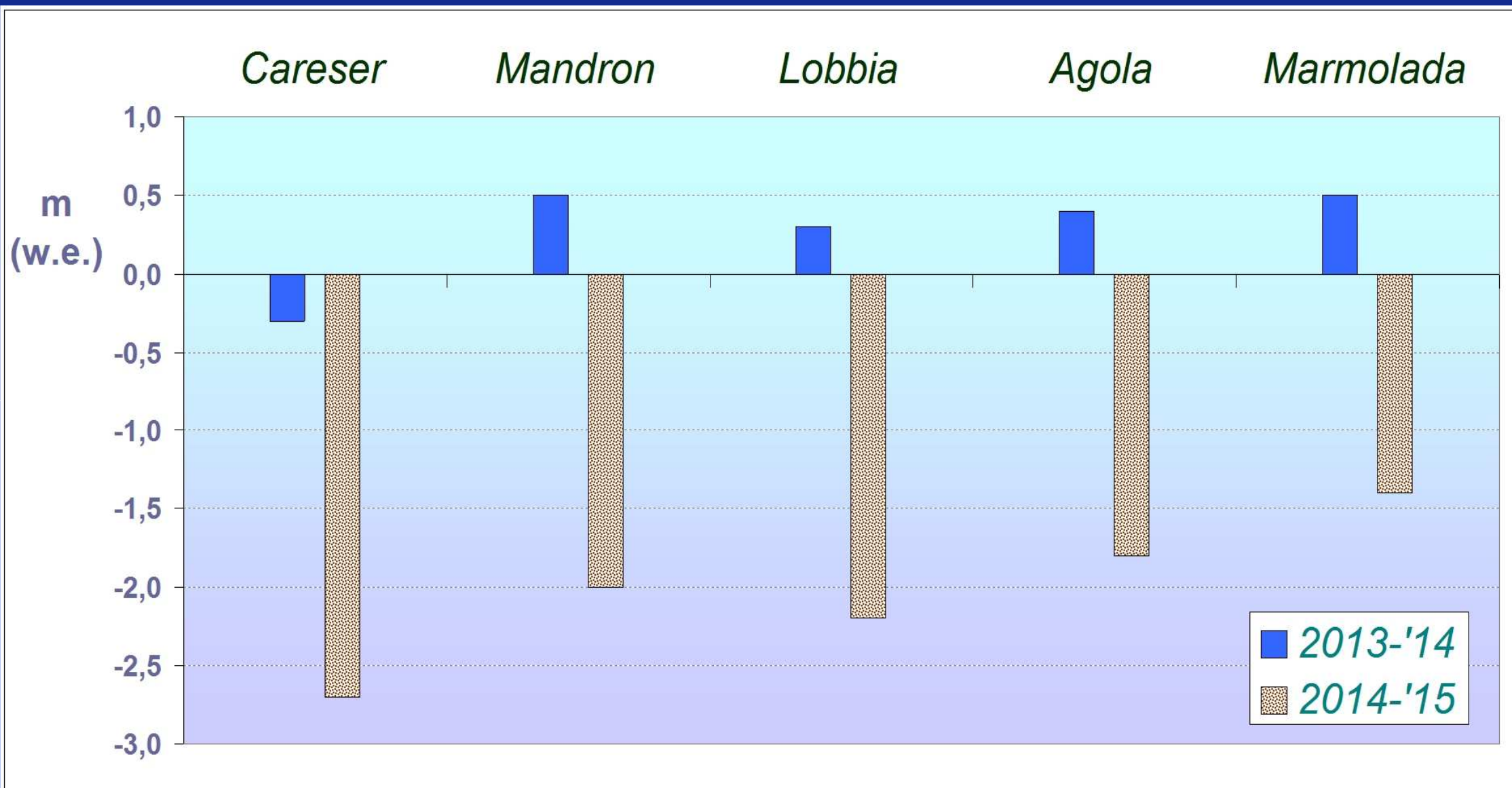
*inverno*

*primavera*

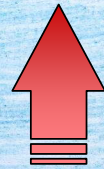
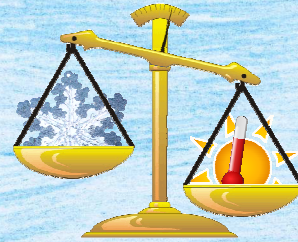
*estate*

*autunno*

## Bilanci di massa degli ultimi due anni



Luca 12 ANNI



+ 1,5 °C

+ 250 m



-1 m/anno